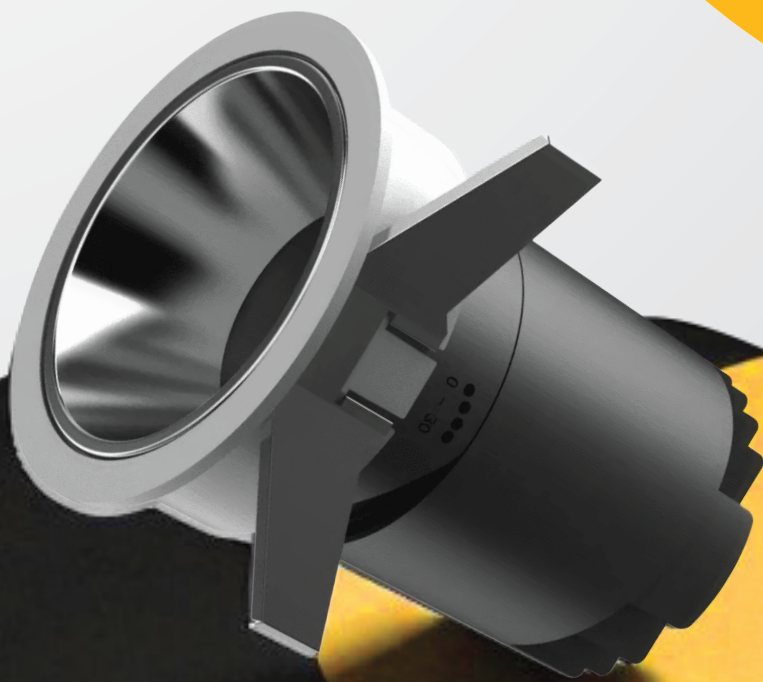


DOWNLIGHTS

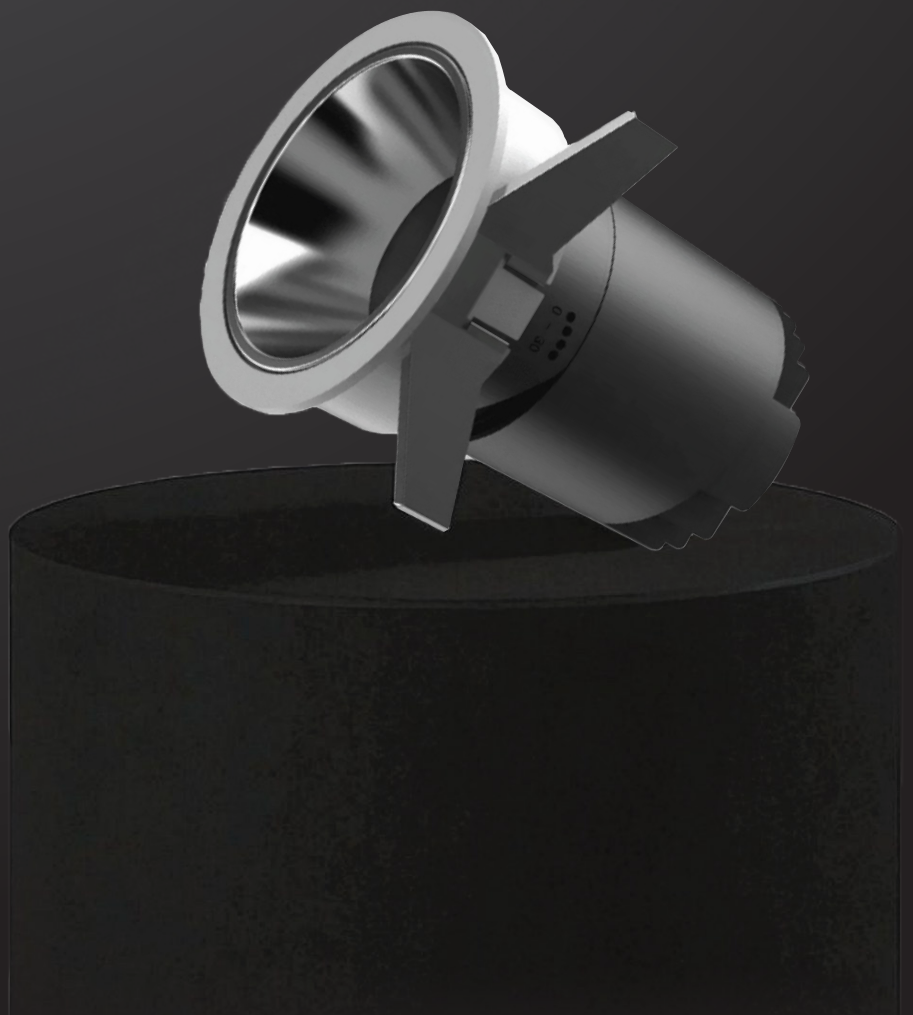
LEDOS
LIGHTING SOLUTIONS



01

IGNIS DOWNLIGHT

Introducing the IGNIS Downlight, a pinnacle of sophistication and cutting-edge lighting technology that transcends traditional boundaries. With its captivating deep reflective cup, this luminaire is a beacon of anti-glare excellence, embodying the latest in Less Glare Technology for a visually seamless experience. The IGNIS Downlight offers a range of aesthetic choices, with six optional reflector cover colors catering to diverse occasions. Boasting a family design that spans a full range of spotlights, it provides a spectrum of choices to meet varying preferences, accentuated by a selection of face ring styles.



Beam Angle



10° Narrow 15° Middle 24° Wide 38° Middle 55° Wide

Applications

- Office
- Residence
- Commercial Building
- Shopping Mall
- Lobby & Corridor
- Retail Outlets

Product Impression



2 inches 3 inches 4 inches 5 inches 6 inches



Sizes	2"	3"	4"	5"	6"
Wattage	6W	12W	20W	30W	30W
Lumen	600lm	1200lm	2000lm	3000lm	3000lm

Cut-out Dimensions

- 2" - 6W - Ø 50mm
- 3" - 12W - Ø 75mm
- 4" - 20W - Ø 95mm
- 5" - 30W - Ø 120mm
- 6" - 30W - Ø 150mm

System Efficacy (lm/W)

Upto 100 lm/W

CRI

>80 & >90

CCT

3000K, 4000K, 6000K

SDCM

<3

Dimmable

ON/OFF , Triac , 1-10V , DALI

Material

Aluminum + PC

Lamp Lumen Lifetime

50,000hrs @ L70/B50

UGR

👁️⁺<12



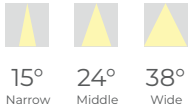
02

LINEAR BLADE C Collar Version

LEDOS LinearBlade C (Collar Version) heralds a revolution in downlighting, centering its design on a deep-embedded LED light source that transforms conventional illumination. This luminaire, featuring a miniaturized optic for elevated visual comfort, is a testament to innovation in lighting science and technology. The pinpoint precision of its LED source creates a mesmerizing circular light emission, providing an aesthetic that transcends traditional frameworks. What sets LinearBlade C apart is its commitment to glare-less technology, ensuring a seamlessly comfortable and visually pleasing experience. Gone are the days of rigid constraints; LinearBlade C invites customization, enabling the creation of invisible light sources that redefine spatial aesthetics.



Beam Angle



15° Narrow 24° Middle 38° Wide

Applications

- Office
- Residence
- Commercial Building
- Shopping Mall
- Lobby & Corridor
- Retail Outlets

System Efficacy (lm/W)

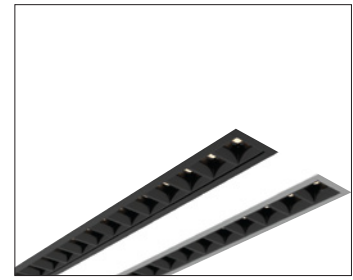
Upto 100 lm/W

CRI

>80 & >90

CCT

3000K, 4000K, 6000K



Sizes	1 Cell	2 Cell	5 Cell	10 Cell	15 Cell
Wattage	2W	4W	10W	20W	30W
Lumen	180lm	380lm	980lm	1980lm	2980lm

Cut-out Dimensions

- 1 Cell - 2W - Ø 43 x 43mm
- 2 Cell - 4W - Ø 73 x 43mm
- 5 Cell - 10W - Ø 145 x 43mm
- 10 Cell - 20W - Ø 277 x 43mm
- 15 Cell - 30W - Ø 410 x 43mm

Product Impression

- 1 Cell
- 2 Cell
- 5 Cell
- 10 Cell
- 15 Cell

SDCM

<3

Dimmable

ON/OFF , Triac , 1-10V , DALI

Material

Aluminum + PC

Lamp Lumen Lifetime

50,000hrs @ L70/B50

UGR

⁺ <15



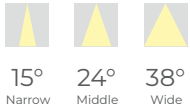
03

LINEAR BLADE S **Stealth**

LEDOS LinearBlade S (Stealth Version) heralds a revolution in downlighting, centering its design on a deep-embedded LED light source that transforms conventional illumination. This luminaire, featuring a miniaturized optic for elevated visual comfort, is a testament to innovation in lighting science and technology. The pinpoint precision of its LED source creates a mesmerizing circular light emission, providing an aesthetic that transcends traditional frameworks. What sets LinearBlade S apart is its commitment to glare-less technology, ensuring a seamlessly comfortable and visually pleasing experience. Gone are the days of rigid constraints; LinearBlade S invites customization, enabling the creation of invisible light sources that redefine spatial aesthetics.



Beam Angle



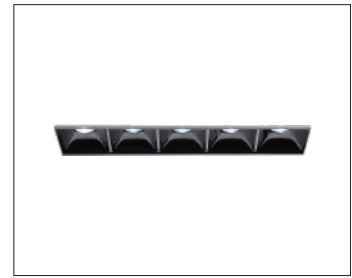
Applications

- Office
- Residence
- Commercial Building
- Shopping Mall
- Lobby & Corridor
- Retail Outlets

System Efficacy (lm/W)

Upto 100 lm/W

CRI >80 & >90 **CCT** 3000K, 4000K, 6000K



Sizes	1 Cell	2 Cell	5 Cell	10 Cell	15 Cell
Wattage	2W	4W	10W	20W	30W
Lumen	180lm	380lm	980lm	1980lm	2980lm

Cut-out Dimensions

- 1 Cell - 2W - Ø 43 x 43mm
- 2 Cell - 4W - Ø 73 x 43mm
- 5 Cell - 10W - Ø 145 x 43mm
- 10 Cell - 20W - Ø 278 x 43mm
- 15 Cell - 30W - Ø 411 x 43mm

Product Impression

- 1 Cell
- 2 Cell
- 5 Cell
- 10 Cell
- 15 Cell

SDCM

<3

Dimmable

ON/OFF , Triac , 1-10V , DALI

Material

Aluminum + PC

Lamp Lumen Lifetime

50,000hrs @ L70/B50

UGR

⁺ <15



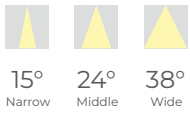
04

LINEAR BLADE AD **Adjustable**

LEDOS LinearBlade AD (Adjustable Version) heralds a revolution in downlighting, centering its design on a deep-embedded LED light source that transforms conventional illumination. This luminaire, featuring a miniaturized optic for elevated visual comfort, is a testament to innovation in lighting science and technology. The pinpoint precision of its LED source creates a mesmerizing circular light emission, providing an aesthetic that transcends traditional frameworks. What sets LinearBlade AD apart is its commitment to glare-less technology, ensuring a seamlessly comfortable and visually pleasing experience. Gone are the days of rigid constraints; LinearBlade AD invites customization, enabling the creation of invisible light sources that redefine spatial aesthetics.



Beam Angle



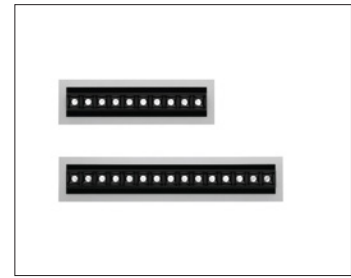
Applications

- Office
- Residence
- Commercial Building
- Shopping Mall
- Lobby & Corridor
- Retail Outlets

System Efficacy (lm/W)

Upto 100 lm/W

CRI >80 & >90 **CCT** 3000K, 4000K, 6000K

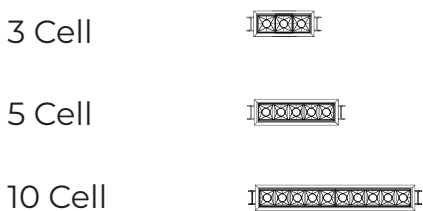


Sizes	3 Cell	5 Cell	10 Cell
Wattage	12W	20W	40W
Lumen	1080lm	1980lm	3980lm

Cut-out Dimensions

- 3 Cell - 12W - Ø 138 x 62mm
- 5 Cell - 20W - Ø 215 x 62mm
- 10 Cell - 40W - Ø 405 x 62mm

Product Impression



SDCM

<3

Dimmable

ON/OFF , Triac , 1-10V , DALI

Material

Aluminum + PC

Lamp Lumen Lifetime

50,000hrs @ L70/B50

UGR

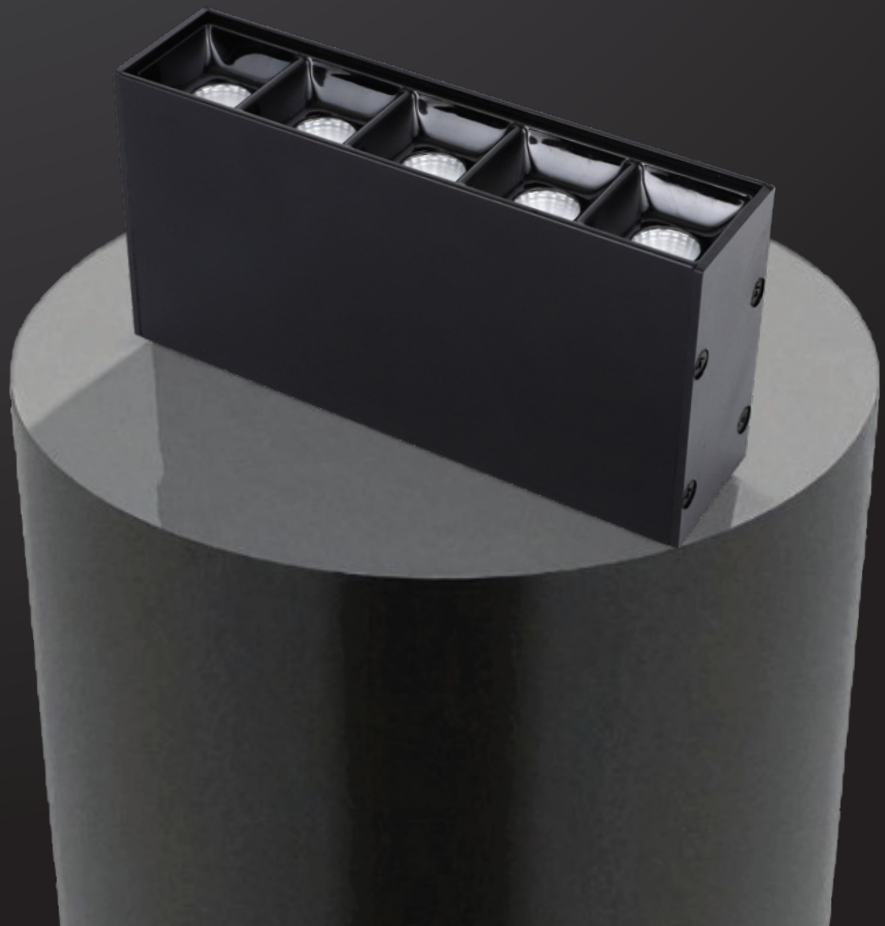
👁️⁺<15



05

LINEAR BLADE SM **Surface Mounted**

LEDOS LinearBlade SM (Surface Mounted Version) heralds a revolution in downlighting, centering its design on a deep-embedded LED light source that transforms conventional illumination. This luminaire, featuring a miniaturized optic for elevated visual comfort, is a testament to innovation in lighting science and technology. The pinpoint precision of its LED source creates a mesmerizing circular light emission, providing an aesthetic that transcends traditional frameworks. What sets LinearBlade SM apart is its commitment to glare-less technology, ensuring a seamlessly comfortable and visually pleasing experience. Gone are the days of rigid constraints; LinearBlade SM invites customization, enabling the creation of invisible light sources that redefine spatial aesthetics.



Beam Angle



24° Middle 38° Wide

Applications

- Office
- Residence
- Commercial Building
- Shopping Mall
- Lobby & Corridor
- Retail Outlets

System Efficacy (lm/W)

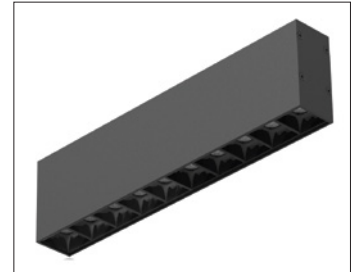
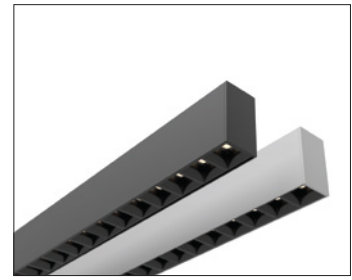
Upto 150 lm/W

CRI

>80 & >90

CCT

3000K, 4000K, 6000K



Sizes	5 Cell	10 Cell	15 Cell	20 Cell
Wattage	5W	10W	15W	20W
Lumen	680lm	1380lm	2108lm	2980lm

Cut-out Dimensions

5 Cell = 5W = Ø 138 x 33 x 60mm

10 Cell = 10W = Ø 270 x 33 x 60mm

15 Cell = 15W = Ø 405 x 33 x 60mm

20 Cell = 20W = Ø 540 x 33 x 60mm

Product Impression

5 Cell



10 Cell



15 Cell



20 Cell



SDCM

<3

Dimmable

No

Material

Aluminum + PC

Lamp Lumen Lifetime

50,000hrs @ L70/B50

UGR

Eye icon ⁺ <15



06

LINEAR BLADE WW Wall Washer

In its elegant simplicity, LinearBlade WW stands as a beacon of innovation in wall washing technology. Born from an integrated process spanning disciplines such as lighting science, technology, design, and culture, this luminary represents the epitome of perfection in wall washing illumination. It is a versatile, flexible, and universal tool, offering a myriad of configurations to meet diverse lighting needs. The LinearBlade WW is not merely a wall washer; it's a result of a visionary process that harmonizes technology and design to create the perfect lighting solution for spaces, embodying adaptability, functionality, and aesthetic finesse.



Beam Angle

Asymmetric

Applications

- Office
- Residence
- Commercial Building
- Shopping Mall
- Lobby & Corridor
- Retail Outlets

System Efficacy (lm/W)

Upto 100 lm/W

CRI

>80 & >90

CCT

3000K, 4000K, 6000K



Sizes	1 Bar	2 Bar	3 Bar
Wattage	10W	20W	30W
Lumen	980lm	1980lm	2980lm

Cut-out Dimensions

- 1 Bar - 10W - Ø 140 x 37mm
- 2 Bar - 20W - Ø 273 x 37mm
- 3 Bar - 30W - Ø 405 x 37mm

Product Impression



SDCM

<3

Dimmable

ON/OFF , Triac , 1-10V , DALI

Material

Aluminum + PC

Lamp Lumen Lifetime

50,000hrs @ L70/B50

UGR

👁️⁺<19



07

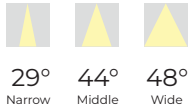
RING BLADE Downlight

Introducing the Ringblade LED Downlight, an epitome of innovation and elegance in lighting design. In its Collar Version, the Ringblade unveils a mesmerizing and compact ring of light, setting a new benchmark in visual comfort through its state-of-the-art Less Glare Technology.

This luminary transcends ordinary illumination, boasting a central core that ingeniously integrates diverse devices to elevate user experience and promote well-being. Ringblade is not merely a lighting fixture; it's an avant-garde solution, an ode to simplicity and adaptability that redefines the ambiance of any space.



Beam Angle



29° 44° 48°
Narrow Middle Wide

Applications

- Office
- Residence
- Commercial Building
- Shopping Mall
- Lobby & Corridor
- Retail Outlets

System Efficacy (lm/W)

Upto 100 lm/W

CRI

>80 & >90

CCT

3000K, 4000K, 6000K



Sizes	3"	5"	7"	8"
Wattage	8W	15W	20W	30W
Lumen	780lm	1380lm	1980lm	2980lm

Cut-out Dimensions

3" - 8W - Ø 75mm

5" - 15W - Ø 120mm

7" - 20W - Ø 165mm

8" - 30W - Ø 205mm

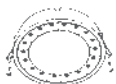
Product Impression



3 inches



5 inches



7 inches



8 inches

SDCM

<3

Dimmable

ON/OFF , Triac , 1-10V , DALI

Material

Aluminum + PC

Lamp Lumen Lifetime

50,000hrs @ L70/B50

UGR

👁️⁺<15



08

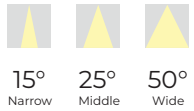
BUTTONSPOT Downlight

Presenting the Button Spot LED Downlight, a pinnacle of discreet brilliance that elevates your space with style and innovation. Designed with precision, this luminaire is more than just a point of light in the ceiling; it's a testament to contemporary sophistication.

The Button Spot, with its Small and discreet profile, embodies a cutting-edge approach to illumination, seamlessly concealing the light source while prioritizing maximum visual comfort. Infused with the latest Less Glare Technology, it goes beyond the ordinary, featuring an anti-glare screen and a meticulously crafted micro-reflector that orchestrates a light beam of unparalleled definition.



Beam Angle



Applications

- Office
- Residence
- Commercial Building
- Shopping Mall
- Lobby & Corridor
- Retail Outlets

System Efficacy (lm/W)

Upto 80 lm/W

CRI

>80 & >90

CCT

3000K, 4000K, 6000K

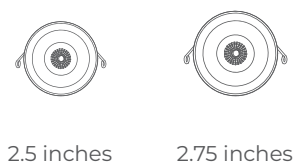


Sizes	1"	1.5"	2"	2.5"	2.75"
Wattage	2W	3W	5W	8W	12W
Lumen	160lm	240lm	400lm	640lm	960lm

Cut-out Dimensions

- 1" - 2W - Ø 26mm
- 1.5" - 3W - Ø 35mm
- 2" - 5W - Ø 50mm
- 2.5" - 8W - Ø 60mm
- 2.75" - 12W - Ø 70mm

Product Impression



SDCM

<3

Dimmable

ON/OFF , Triac , 1-10V , DALI

Material

Aluminum + PC

Lamp Lumen Lifetime

50,000hrs @ L70/B50

UGR

eye ⁺ <15



09

SPECTER Downlight

Introducing the Specter Downlight, an unparalleled fusion of form and functionality that redefines the landscape of recessed LED lighting. With a sleek Camouflage profile and an almost bezel-less aesthetic, this luminaire is the epitome of contemporary sophistication. Specter Downlight transcends ordinary lighting solutions with its innovative Less Glare Technology, ensuring a visual experience that is both seamless and comfortable.

A versatile family of recessed LED downlights, the Specter series offers a spectrum of possibilities with four sizes (S, M1, M2, L), two formats (round and square), and two light beam directions (symmetrical or asymmetrical).



Beam Angle



10° Narrow 24° Middle 38° Wide

Applications

- Office
- Residence
- Commercial Building
- Shopping Mall
- Lobby & Corridor
- Retail Outlets

System Efficacy (lm/W)

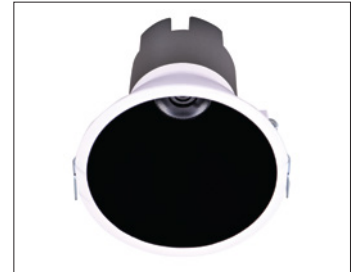
Upto 80 lm/W

CRI

>80 & >90

CCT

3000K, 4000K, 6000K



Sizes	2"	3"	3.5"	4"
Wattage	5W	5W	10W	10W
Lumen	400lm	400lm	800lm	800lm

Cut-out Dimensions

2" - 5W - Ø 65mm

3" - 5W - Ø 75mm

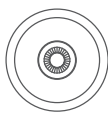
3.5" - 10W - Ø 85mm

4" - 10W - Ø 100mm

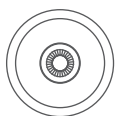
Product Impression



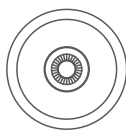
2 inches



3 inches



3.5 inches



4 inches

SDCM

<3

Dimmable

ON/OFF , Triac , 1-10V , DALI

Material

Aluminum + PC

Lamp Lumen Lifetime

50,000hrs @ L70/B50

UGR

eye⁺ <15





LEDOS

LIGHTING SOLUTIONS

Redefining Lighting



+92 42 35847561 | +92 42 35847562



Office#410, 4th Floor, Al-Qader Heights,
New Garden Town Lahore, Pakistan



info@ledoslighting.com